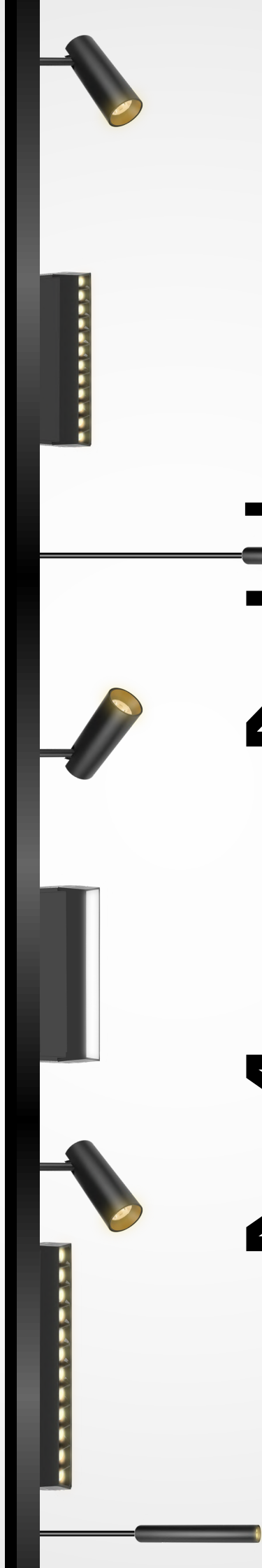


Powered by Mesmerize Lighting



# MagNIKO

Magnetic Track Eco-System



# MagNiko

Led Magnetic Track Eco-System

## Adapt without limits.

MagNiko is more than a lighting solution, it's a magnetic track eco-system designed to move with the rhythm of modern spaces. From high-end retail environments to contemporary homes and large-scale commercial projects, lighting is no longer fixed. It evolves.

A single track becomes the foundation for a fully customisable system, where interchangeable modules snap into place, shift effortlessly, and work together seamlessly.

Precision optics deliver controlled beam angles.  
Tunable colour temperatures shape the mood.  
Seamless dimming allows for complete control.

Every element is engineered to perform, while giving designers, architects, and developers the freedom to create without constraint.

One system. Endless configurations.



Led Magnetic

# TRACK SPOT LIGHT



## SPECIFICATION

The MagNiko Spot Light delivers precise, focused illumination with a sleek recessed design, making it ideal for both accent and task lighting. Engineered with anti-glare optics and adjustable beam control.



**12W | 18W**  
AVAILABLE



**24°**  
BEAM ANGLE



**BLUETOOTH**  
INTERGRATED



**CCT**  
3000K | 4000K |  
6500K



**TRIAC**  
DIMMER



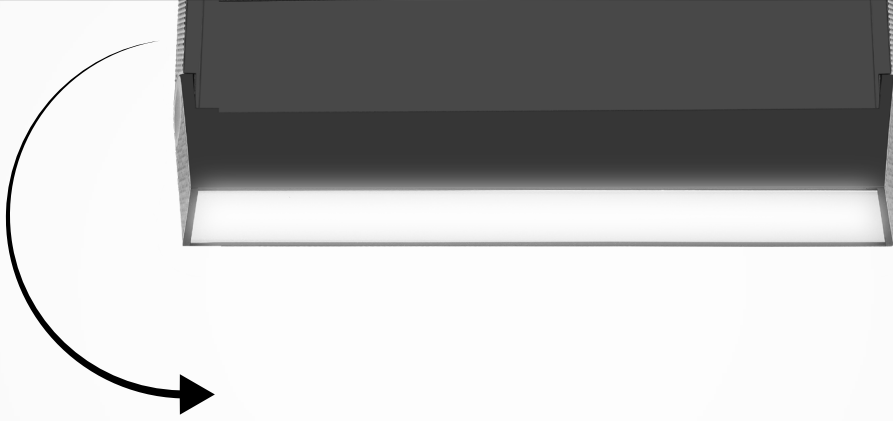
**5YEAR**  
WARRANTY



Led Magnetic

# ADJUSTABLE DIFFUSER LIGHT

Effortless  
adjustability



## SPECIFICATION

The MagNiko Adjustable Diffused Light combines soft, ambient illumination with directional flexibility, making it a versatile solution for both commercial and residential spaces.



**12W | 18W**  
AVAILABLE



**120°**  
BEAM ANGLE



**BLUETOOTH**  
INTERGRATED



**CCT**  
3000K | 4000K |  
6500K



**TRIAC**  
DIMMER



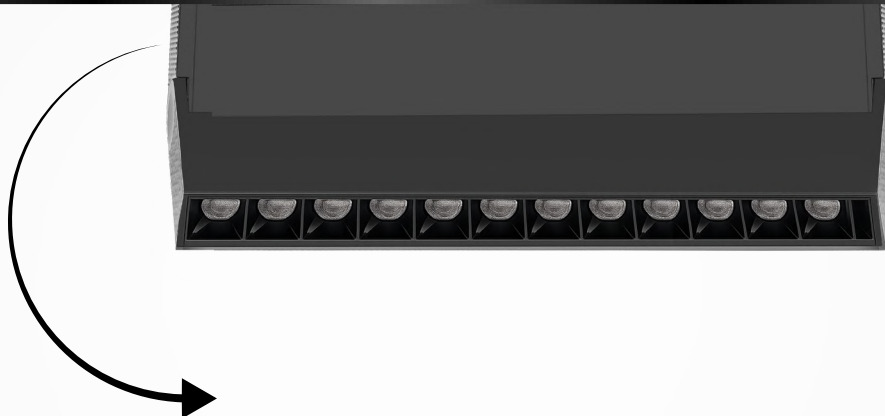
**5YEAR**  
WARRANTY



Led Magnetic

# ADJUSTABLE GRILLE LIGHT

Effortless  
adjustability



## SPECIFICATION

The MagNiko Adjustable Grille Light combines precision optics with directional flexibility, delivering a anti-glare grille optical design that provides comfortable lighting while reducing glare.



**12W | 18W**  
AVAILABLE



**24°**  
BEAM ANGLE



**BLUETOOTH**  
INTERGRATED



**CCT**  
3000K | 4000K |  
6500K



**TRIAC**  
DIMMER



**5YEAR**  
WARRANTY



Led Magnetic

# SUSPENDED PENDANT LIGHT



## SPECIFICATION

The MagNiko Suspended Pendant Light blends modern design with soft, diffused illumination, creating a stylish centerpiece for any interior. Its suspended form delivers comfortable, glare-free lighting that enhances any atmosphere.



**7W**  
AVAILABLE



**24°**  
BEAM ANGLE



**BLUETOOTH**  
INTERGRATED



**CCT**  
3000K | 4000K |  
6500K



**TRIAC**  
DIMMER

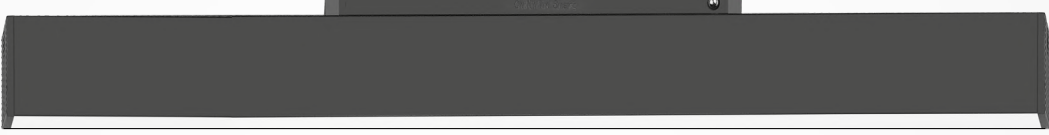


**5YEAR**  
WARRANTY



Led Magnetic

# FIXED DIFFUSER LIGHT



Seamless recessed  
design

## SPECIFICATION

The MagNiko Fixed Diffused Light delivers soft, uniform illumination through its precision diffuser, ensuring comfortable, glare-free lighting for everyday use. With its clean recessed design, it integrates seamlessly into modern interiors.



**12W | 24W**  
AVAILABLE



**120°**  
BEAM ANGLE



**BLUETOOTH**  
INTERGRATED



**CCT**  
3000K | 4000K |  
6500K




**TRIAC**  
DIMMER



**5YEAR**  
WARRANTY



Led Magnetic  
**FIXED GRILLE LIGHT**



Seamless recessed  
design

**SPECIFICATION**

The MagNiko Fixed Grille Light is a modern module that delivers focused illumination with exceptional visual comfort due to its anti-glare grille optical design, it perfect for interior environments that require focused illumination.



**12W | 18W**  
AVAILABLE



**24°**  
BEAM ANGLE



**BLUETOOTH**  
INTERGRATED



**CCT**  
3000K | 4000K |  
6500K



**TRIAC**  
DIMMER



**5YEAR**  
WARRANTY



**Included: 11 lighting modules and 24 accessories.**

**Each module is equipped with :**

- CCT ( Warm white | Natural white | Cool white)
- A Smart option which allows you to remotely control each module via the Smart Life App
- For the Smart function to work, you would need a Smart driver ( refer to page 22)  
ML-NKO-PSBT-100W48V  
ML-NKO-PSBT-200W48V
- Each luminaire has an orientation arrow. If the arrow points away from the driver, the colour you select in the app is displayed correctly (warm white shows as warm white). If the arrow points toward the driver, the polarity reverses and colours appear opposite. Checking arrow direction during installation ensures accurate colour output and simple, reliable control.

## Modular Luminaires



L222\*W22\*H44mm

### ML-NKO-FG-12W-CCTB-24

#### MagNiko Fixed Grille Light 12W CCT+Bluetooth

Clips into the Trimless (ML-NKO-TRL-2M/3M) or Surface Mounted (ML-NKO-SM-2M/3M) track system, with the arrow facing away from the driver to ensure correct power flow. This fixed anti-glare grille light provides controlled illumination with CCT adjustment and Bluetooth control via the Smart Life app when paired with a compatible driver.



L327\*W22\*H44mm

### ML-NKO-FG-18W-CCTB-24

#### MagNiko Fixed Grille Light 18W CCT+Bluetooth

Installs into both trimless and surface-mounted track rails, ensuring the arrow faces away from the driver for proper operation. This higher output fixed grille light delivers low-glare lighting with adjustable CCT and Bluetooth control when used with a compatible dimmable driver.



L222\*W22\*H103mm

**ML-NKO-AG-12W-CCTB-24**

**MagNiko Adjustable Grille Light 12W  
CCT+Bluetooth**

Magnetically inserts into the track system with the arrow facing away from the driver to maintain correct polarity and function. The adjustable grille design allows directional lighting, combined with CCT tuning and Bluetooth control via the Smart Life app.



L327\*W22\*H103mm

**ML-NKO-AG-18W-CCTB-24**

**MagNiko Adjustable Grille Light 18W  
CCT+Bluetooth**

Clips securely into the magnetic track rail (trimless or surface), ensuring correct arrow orientation away from the driver. This higher output adjustable grille light offers precise directional lighting with anti-glare performance, CCT adjustment and Bluetooth control.

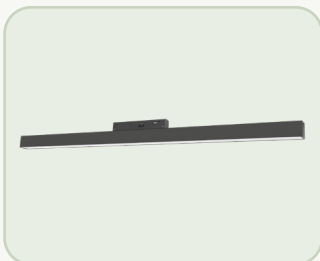


L300\*W22\*H44

**ML-NKO-FD-12W-CCTB-120**

**MagNiko Fixed Diffused Light 12W  
CCT+Bluetooth**

Installs into both trimless and surface-mounted tracks, with the arrow facing away from the driver to ensure proper electrical flow. This fixed diffused light provides wide, even illumination with CCT adjustability and Bluetooth smart control when paired with a compatible driver.

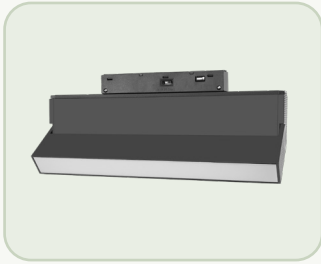


L600\*W22\*H44

**ML-NKO-FD-24W-CCTB-120**

**MagNiko Fixed Diffused Light 24W  
CCT+Bluetooth**

Magnetically mounts into the track system with correct arrow orientation for reliable operation. This higher output diffused light delivers broad ambient lighting with CCT control and Bluetooth functionality via the Smart Life app.



L222\*W22\*H103mm

**ML-NKO-AD-12W-CCTB-120****MagNiko Adjustable Diffused Light 12W CCT+Bluetooth**

Clips into the magnetic track (trimless or surface-mounted), ensuring the arrow faces away from the driver. The adjustable diffused design allows soft ambient lighting to be directed where needed, with CCT adjustment and Bluetooth control via a compatible driver.



L327\*W22\*H103mm

**ML-NKO-AD-18W-CCTB-120****MagNiko Adjustable Diffused Light 18W CCT+Bluetooth**

Installs into the magnetic track system with correct arrow orientation for proper function. This higher output adjustable diffused light provides flexible ambient lighting with directional control, CCT tuning and Bluetooth smart control.



Ø40\*L120mm

**ML-NKO-TS-12W-CCTB-24****MagNiko Track Spot Light 12W CCT+Bluetooth**

Snaps into the magnetic track rail (trimless or surface), with the arrow facing away from the driver to ensure correct power connection. This directional spotlight is ideal for accent lighting, offering CCT adjustment and Bluetooth control via the Smart Life app.



Ø50\*L135mm

**ML-NKO-TS-18W-CCTB-24****MagNiko Track Spot Light 18W CCT+Bluetooth**

Clips into the magnetic track system with correct arrow alignment away from the driver. This higher output spotlight provides focused illumination for feature lighting, with adjustable CCT and Bluetooth smart control.



Ø40\*L400mm

### ML-NKO-SP-7W-CCTB-24

## MagNiko Suspended Pendant Light 7W CCT+Bluetooth

Attaches to the magnetic track system with the arrow facing away from the driver, ensuring proper electrical connection. This suspended pendant module provides decorative feature lighting with CCT adjustment and Bluetooth control when paired with a compatible driver.

## Modular Accessories



### ML-NKO-PC-48V

## MagNiko Power Connector 4Wire (Requires Power Supply)

4-wire power connector that clips directly into the track. Connect the incoming live, neutral and earth from a ML-NKO-PSTD-100W48V or ML-NKO-PSTD-150W48V power supply to this connector to feed power into the track system.



### ML-NKO-IC-48V

## MagNiko I Connector 4Wire

4-wire conductive connector used with the ML-NKO-SM-HC to transfer power from one surface-mounted track section to another, ensuring the connected track on the other side remains powered.



### ML-NKO-SC-48V

## MagNiko Straight Connector 4Wire

The 4-wire straight connector is used to transfer power from one track to another in a straight line. It can also be used when there is a small gap between two track sections placed next to each other, allowing power to continue across that gap.

**ML-NKO-LC-48V****MagNiko L Connector 4Wire**

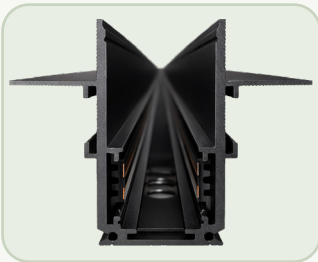
4-wire conductive connector used to transfer power through compatible trimless corner connections, such as the ML-NKO-TRL-VC and ML-NKO-TRL-HC, ensuring the connected trimless track on the other side remains powered.

**ML-NKO-TC-48V****MagNiko T Connector 4Wire**

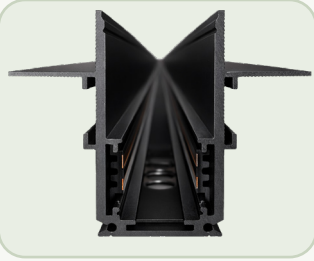
4-wire T connector used with the ML-NKO-TRL-TC profile to carry power from one trimless track into the two trimless track sections connected on either side of the T junction.

**ML-NKO-XC-48V****MagNiko X Connector 4Wire**

4-wire X connector used with the ML-NKO-TRL-XC profile to carry power from one trimless track through the X junction and into the other connected track sections.

**ML-NKO-TRL-2M****MagNiko Trimless 4Wire 2M Profile (2000 x 30.2 x 46.7mm)**

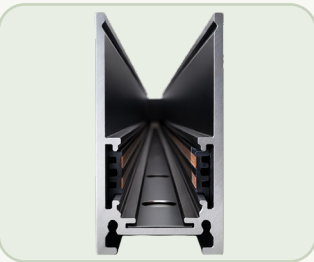
2 m trimless 4-wire track profile for recessed installations. This track can be joined with ML-NKO-TRL-HC, ML-NKO-TRL-VC, ML-NKO-TRL-TC and ML-NKO-TRL-XC profile connectors to create horizontal L, vertical L, T and X shaped layouts. Use ML-NKO-TRL-SBC to help keep joined sections firm and stable.



### ML-NKO-TRL-3M

## MagNiko Trimless 4Wire 3M Profile (3000 x 30.2 x 46.7mm)

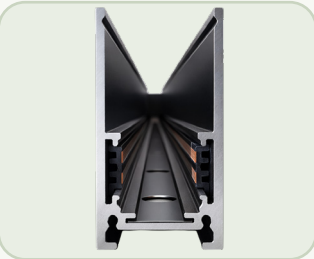
3 m trimless 4-wire track profile for recessed installations. This track can be joined with ML-NKO-TRL-HC, ML-NKO-TRL-VC, ML-NKO-TRL-TC and ML-NKO-TRL-XC profile connectors to create horizontal L, vertical L, T and X shaped layouts. Use ML-NKO-TRL-SBC to help keep joined sections firm and stable.



### ML-NKO-SM-2M

## MagNiko Surface Mount 4Wire 2M Profile (2000 x 26.2 x 50.6mm)

2 m surface-mount 4-wire track profile. It can be connected with ML-NKO-SM-HC to create a horizontal L shaped layout, used with ML-NKO-SM-SBC for added stability, and suspended from the ceiling with the ML-NKO-SK-2M suspension kit.



### ML-NKO-SM-3M

## MagNiko Surface Mount 4Wire 3M Profile (3000 x 26.2 x 50.6mm)

3 m surface-mount 4-wire track profile. It can be connected with ML-NKO-SM-HC to create a horizontal L shaped layout, used with ML-NKO-SM-SBC for added stability, and suspended from the ceiling with the ML-NKO-SK-2M suspension kit.



### ML-NKO-TRL-HC

## MagNiko Horizontal Corner for Trimless 4Wire Profile

Trimless horizontal corner profile connector used to join ML-NKO-TRL-2M and ML-NKO-TRL-3M track sections together to create a horizontal L shaped layout or design.



**ML-NKO-TRL-TC**

**MagNiko T Shaped for Trimless 4Wire Profile**

Trimless T shaped profile connector used to join ML-NKO-TRL-2M and ML-NKO-TRL-3M track sections together to create a T shaped layout or design.



**ML-NKO-TRL-XC**

**MagNiko X Shaped for Trimless 4Wire Profile**

Trimless X shaped profile connector used to join ML-NKO-TRL-2M and ML-NKO-TRL-3M track sections together to create an X shaped layout or design.



**ML-NKO-TRL-VC**

**MagNiko Vertical Corner for Trimless 4Wire Profile**

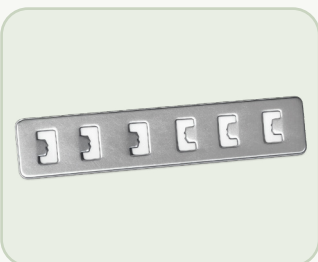
Trimless vertical corner profile connector used to join ML-NKO-TRL-2M and ML-NKO-TRL-3M track sections together to create a vertical L shaped layout or design.



**ML-NKO-SM-HC**

**MagNiko Horizontal Corner for Surface Mount 4Wire Profile**

Surface-mount horizontal corner profile connector used to join ML-NKO-SM-2M and ML-NKO-SM-3M track sections together in a horizontal L shaped layout.



**ML-NKO-TRL-SBC**

**MagNiko Stabilizer Connector for Trimless**

Stabilizer connector for the trimless track system. It helps hold ML-NKO-TRL-2M and ML-NKO-TRL-3M track sections firmly together and keeps the run stable.



**ML-NKO-SM-SBC**

**MagNiko Stabilizer Connector for Surface Mount**

Stabilizer connector for the surface-mount track system. It helps hold ML-NKO-SM-2M and ML-NKO-SM-3M track sections firmly together and keeps the run stable.



**ML-NKO-SK-2M**

**MagNiko Suspended Kit 2M**

Suspension kit used to suspend the surface-mount track from the ceiling.



**ML-NKO-PSND-100W48V**

**MagNiko Power Supply 100W 48V Non Dimmable**

100W 48V non-dimmable power supply for the MagNiko track system. Use the ML-NKO-PC-48V to connect power into the track. All MagNiko drivers can supply runs of up to 25 metres.



**ML-NKO-PSND-200W48V**

**MagNiko Power Supply 200W 48V Non Dimmable**

200W 48V non-dimmable power supply for the MagNiko track system. Use the ML-NKO-PC-48V to connect power into the track. All MagNiko drivers can supply runs of up to 25 metres.



### ML-NKO-PSTD-100W48V

#### MagNiko Power Supply 100W 48V Triac Dimmable Requires ML-NKO-PC-48V

100W 48V triac dimmable power supply. Requires the ML-NKO-PC-48V power connector, and a compatible shuttle dimmer is required for the driver to perform its dimming function. All MagNiko drivers can supply runs of up to 25 metres.



### ML-NKO-PSTD-150W48V

#### MagNiko Power Supply 150W 48V Triac Dimmable Requires ML-NKO-PC-48V

150W 48V triac dimmable power supply. Requires the ML-NKO-PC-48V power connector, and a compatible shuttle dimmer is required for the driver to perform its dimming function. All MagNiko drivers can supply runs of up to 25 metres.



### ML-NKO-PSBT-100W48V

#### MagNiko Power Supply 100W 48V Bluetooth CCT + Dimming

100W 48V Bluetooth CCT + dimming power supply with dimming functionality built in, so no bell-press shuttle dimmer is required. Connect the track using the ML-NKO-PC-48V, then control the light via Bluetooth using the Smart Life or Tuya app on your phone. All MagNiko drivers can supply runs of up to 25 metres.



### ML-NKO-PSBT-200W48V

#### MagNiko Power Supply 200W 48V Bluetooth CCT + Dimming

200W 48V Bluetooth CCT + dimming power supply with dimming functionality built in, so no bell-press shuttle dimmer is required. Connect the track using the ML-NKO-PC-48V, then control the light via Bluetooth using the Smart Life or Tuya app on your phone. All MagNiko drivers can supply runs of up to 25 metres.